

EXHIBIT "A"
LEGAL DESCRIPTION
PUBLIC ALLEY VACATION

SITUATE IN THE CITY OF PETALUMA, COUNTY OF SONOMA AND STATE OF CALIFORNIA.

BEING A PORTION OF A 14 FOOT WIDE PUBLIC ALLEY BETWEEN BLOCK 2 AND BLOCK 3 AS SHOWN UPON THAT CERTAIN MAP ENTITLED "PLAT SHOWING SUBDIVISION OF FAIRGROUNDS PETALUMA" FILED IN BOOK 3 OF MAPS, PAGE 30, SONOMA COUNTY RECORDS, DESCRIBED AS FOLLOWS:

THAT PORTION OF THE NORTHERLY HALF OF SAID PUBLIC ALLEY BOUNDED BY THE EXTENSIONS OF THE WESTERLY AND EASTERLY SIDELINES OF LOT 4, BLOCK 2 OF SAID MAP.

CONTAINING 350 SQ. FT, MORE OR LESS.

PREPARED IN THE OFFICE OF STEVEN J. LAFRANCHI & ASSOCIATES, INC. AND IS BASED ON RECORD DOCUMENTS.



STEVEN J. LAFRANCHI, P.L.S. 6368

9-3-2022

DATE

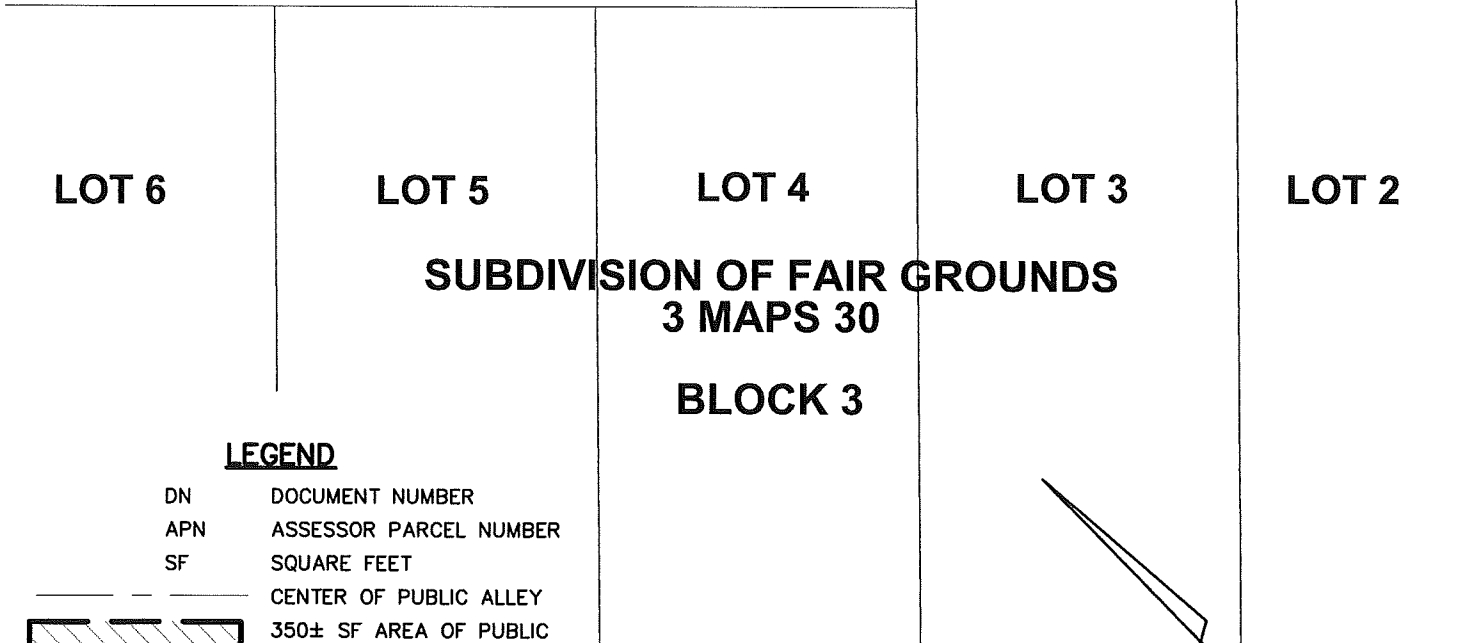
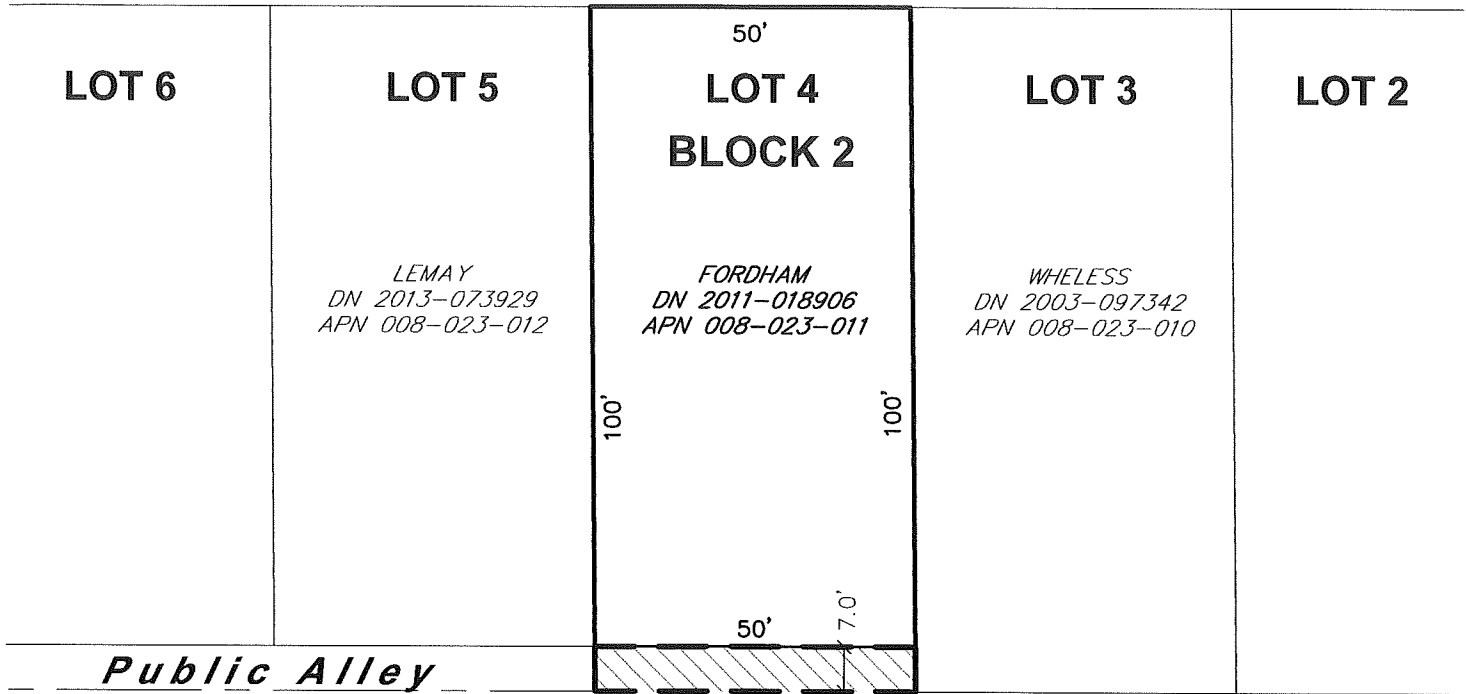


STEVEN J. LAFRANCHI & ASSOCIATES, INC.
CIVIL ENGINEERS ~ LAND SURVEYORS ~ LAND PLANNERS - LANDSCAPE ARCHITECTS
PETALUMA THEATRE SQUARE
140 SECOND STREET, SUITE 312, PETALUMA, CA 94952
TEL 707-762-3122 FAX 707-762-3239
Fordham_LD-Ex A_Public Alley Vacation_Lot 4 Block 2.docx

EXHIBIT "B"
PUBLIC ALLEY VACATION

SEE EXHIBIT "A" FOR LEGAL DESCRIPTION
FOR GRAPHIC ILLUSTRATION AND INFORMATIVE PURPOSES ONLY

Fair Street



Sheldon Street



STEVEN J. LAFRANCHI & ASSOCIATES, INC.
CIVIL ENGINEERS ~ LAND SURVEYORS ~ LAND PLANNERS ~ LANDSCAPE ARCHITECTS

PETALUMA THEATRE SQUARE
PETALUMA, CALIFORNIA 94952
140 SECOND STREET, SUITE 312
707-762-3122 FAX 707-762-3239

NORTH
SCALE: 1" = 30'

EXHIBIT "A"
LEGAL DESCRIPTION
PUBLIC ALLEY VACATION

SITUATE IN THE CITY OF PETALUMA, COUNTY OF SONOMA AND STATE OF CALIFORNIA.

BEING A PORTION OF A 14 FOOT WIDE PUBLIC ALLEY BETWEEN BLOCK 2 AND BLOCK 3 AS SHOWN UPON THAT CERTAIN MAP ENTITLED "PLAT SHOWING SUBDIVISION OF FAIRGROUNDS PETALUMA" FILED IN BOOK 3 OF MAPS, PAGE 30, SONOMA COUNTY RECORDS, DESCRIBED AS FOLLOWS:

THAT PORTION OF THE NORTHERLY HALF OF SAID PUBLIC ALLEY BOUNDED BY THE EXTENSIONS OF THE WESTERLY AND EASTERLY SIDELINES OF LOT 4, BLOCK 3 OF SAID MAP.

CONTAINING 350 SQ. FT, MORE OR LESS.

PREPARED IN THE OFFICE OF STEVEN J. LAFRANCHI & ASSOCIATES, INC. AND IS BASED ON RECORD DOCUMENTS.



STEVEN J. LAFRANCHI, P.L.S. 6368

9-3-2022

DATE

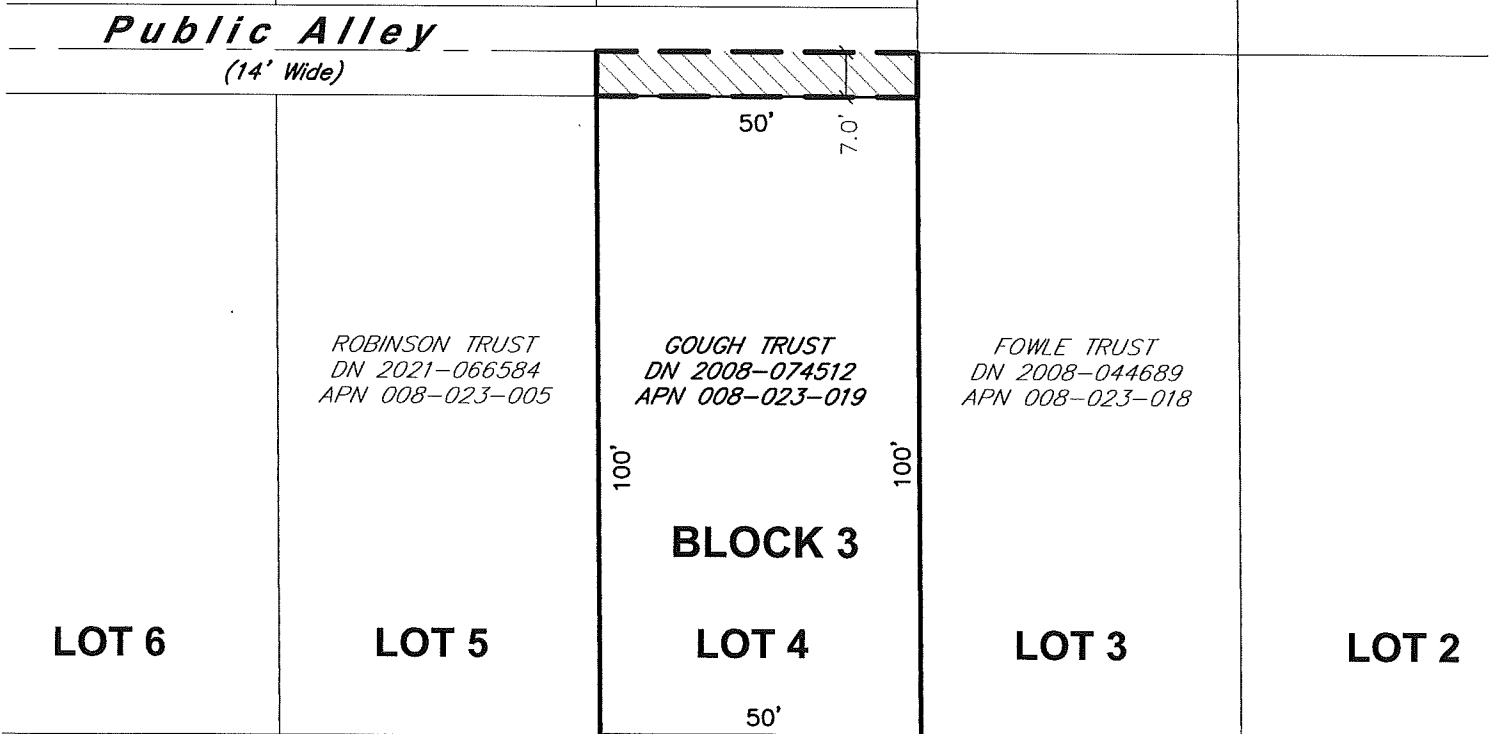
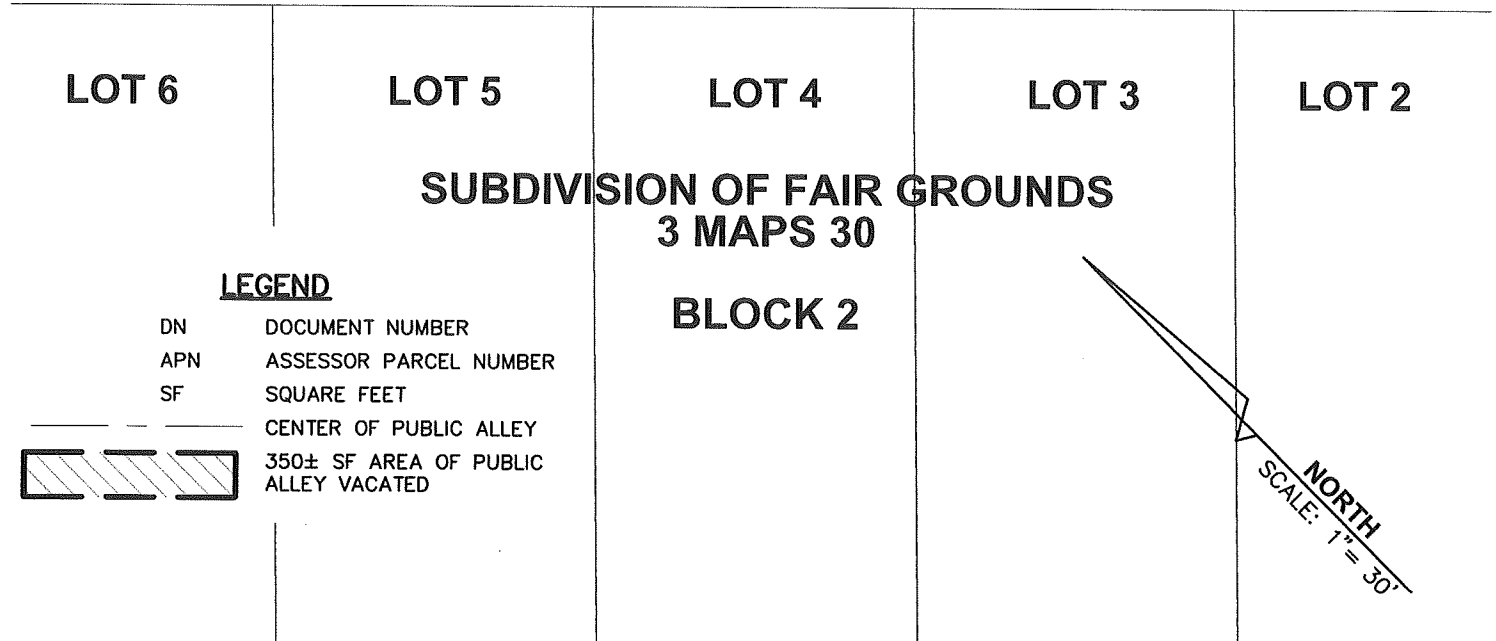


STEVEN J. LAFRANCHI & ASSOCIATES, INC.
CIVIL ENGINEERS ~ LAND SURVEYORS ~ LAND PLANNERS - LANDSCAPE ARCHITECTS
PETALUMA THEATRE SQUARE
140 SECOND STREET, SUITE 312, PETALUMA, CA 94952
TEL 707-762-3122 FAX 707-762-3239
Gough_LD-Ex A_Public Alley Vacation_Lot 4 Block 3.docx

EXHIBIT "B"
PUBLIC ALLEY VACATION

SEE EXHIBIT "A" FOR LEGAL DESCRIPTION
FOR GRAPHIC ILLUSTRATION AND INFORMATIVE PURPOSES ONLY

Fair Street



Sheldon Street



STEVEN J. LAFRANCHI & ASSOCIATES, INC.
CIVIL ENGINEERS ~ LAND SURVEYORS ~ LAND PLANNERS ~ LANDSCAPE ARCHITECTS

PETALUMA THEATRE SQUARE
PETALUMA, CALIFORNIA 94952
140 SECOND STREET, SUITE 312
707-762-3122 FAX 707-762-3239

EXHIBIT "A"
LEGAL DESCRIPTION
PUBLIC ALLEY VACATION

SITUATE IN THE CITY OF PETALUMA, COUNTY OF SONOMA AND STATE OF CALIFORNIA.

BEING A PORTION OF A 14 FOOT WIDE PUBLIC ALLEY BETWEEN BLOCK 2 AND BLOCK 3 AS SHOWN UPON THAT CERTAIN MAP ENTITLED "PLAT SHOWING SUBDIVISION OF FAIRGROUNDS PETALUMA" FILED IN BOOK 3 OF MAPS, PAGE 30, SONOMA COUNTY RECORDS, DESCRIBED AS FOLLOWS:

THAT PORTION OF THE NORTHERLY HALF OF SAID PUBLIC ALLEY BOUNDED BY THE EXTENSIONS OF THE WESTERLY AND EASTERLY SIDELINES OF LOT 5, BLOCK 2 OF SAID MAP.

CONTAINING 350 SQ. FT, MORE OR LESS.

PREPARED IN THE OFFICE OF STEVEN J. LAFRANCHI & ASSOCIATES, INC. AND IS BASED ON RECORD DOCUMENTS.

STEVEN J. LAFRANCHI, P.L.S. 6368

9-3-2022

DATE



STEVEN J. LAFRANCHI & ASSOCIATES, INC.

CIVIL ENGINEERS ~ LAND SURVEYORS ~ LAND PLANNERS - LANDSCAPE ARCHITECTS

PETALUMA THEATRE SQUARE

140 SECOND STREET, SUITE 312, PETALUMA, CA 94952

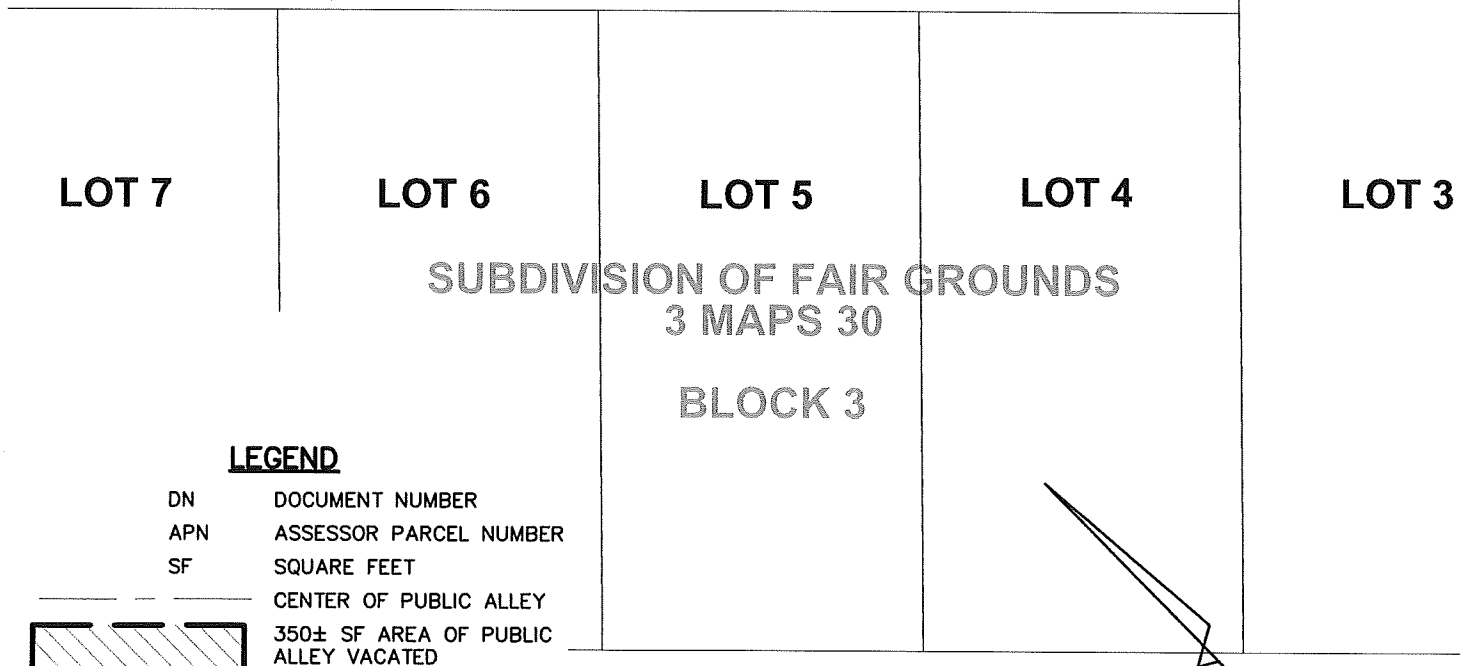
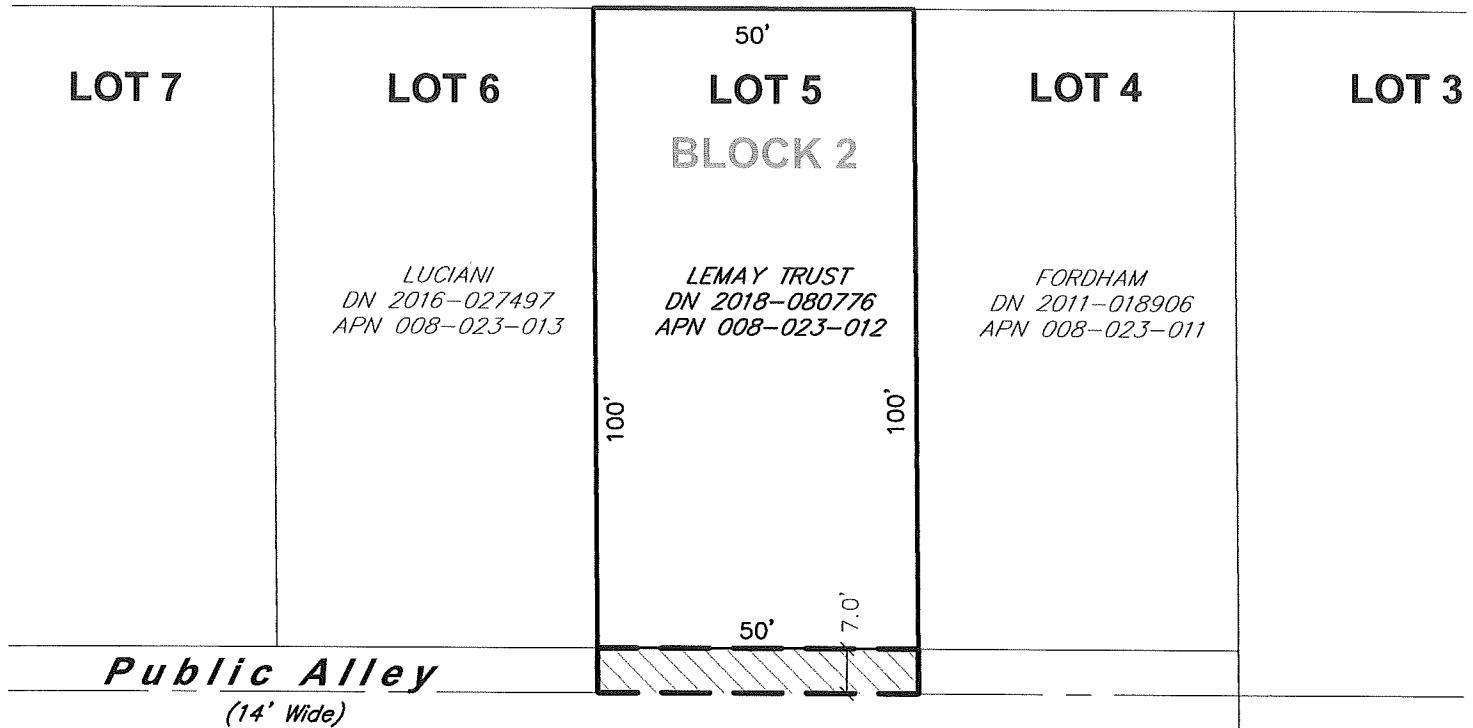
TEL 707-762-3122 FAX 707-762-3239

Lemay_LD-Ex A_Public Alley Vacation_Lot 5 Block 2.docx

EXHIBIT "B"
PUBLIC ALLEY VACATION

SEE EXHIBIT "A" FOR LEGAL DESCRIPTION
FOR GRAPHIC ILLUSTRATION AND INFORMATIVE PURPOSES ONLY

Fair Street



Sheldon Street



STEVEN J. LAFRANCHI & ASSOCIATES, INC.
CIVIL ENGINEERS ~ LAND SURVEYORS ~ LAND PLANNERS ~ LANDSCAPE ARCHITECTS

PETALUMA THEATRE SQUARE
PETALUMA, CALIFORNIA 94952
140 SECOND STREET, SUITE 312
707-762-3122 FAX 707-762-3239

NORTH
SCALE: 1" = 30'

EXHIBIT "A"
LEGAL DESCRIPTION
PUBLIC ALLEY VACATION

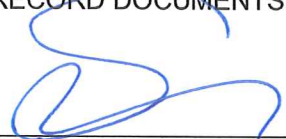
SITUATE IN THE CITY OF PETALUMA, COUNTY OF SONOMA AND STATE OF CALIFORNIA.

BEING A PORTION OF A 14 FOOT WIDE PUBLIC ALLEY BETWEEN BLOCK 2 AND BLOCK 3 AS SHOWN UPON THAT CERTAIN MAP ENTITLED "PLAT SHOWING SUBDIVISION OF FAIRGROUNDS PETALUMA" FILED IN BOOK 3 OF MAPS, PAGE 30, SONOMA COUNTY RECORDS, DESCRIBED AS FOLLOWS:

THAT PORTION OF THE NORTHERLY HALF OF SAID PUBLIC ALLEY BOUNDED BY THE EXTENSIONS OF THE WESTERLY AND EASTERLY SIDELINES OF LOT 6, BLOCK 2 OF SAID MAP.

CONTAINING 350 SQ. FT, MORE OR LESS.

PREPARED IN THE OFFICE OF STEVEN J. LAFRANCHI & ASSOCIATES, INC. AND IS BASED ON RECORD DOCUMENTS.



STEVEN J. LAFRANCHI, P.L.S. 6368

9-3-2022

DATE

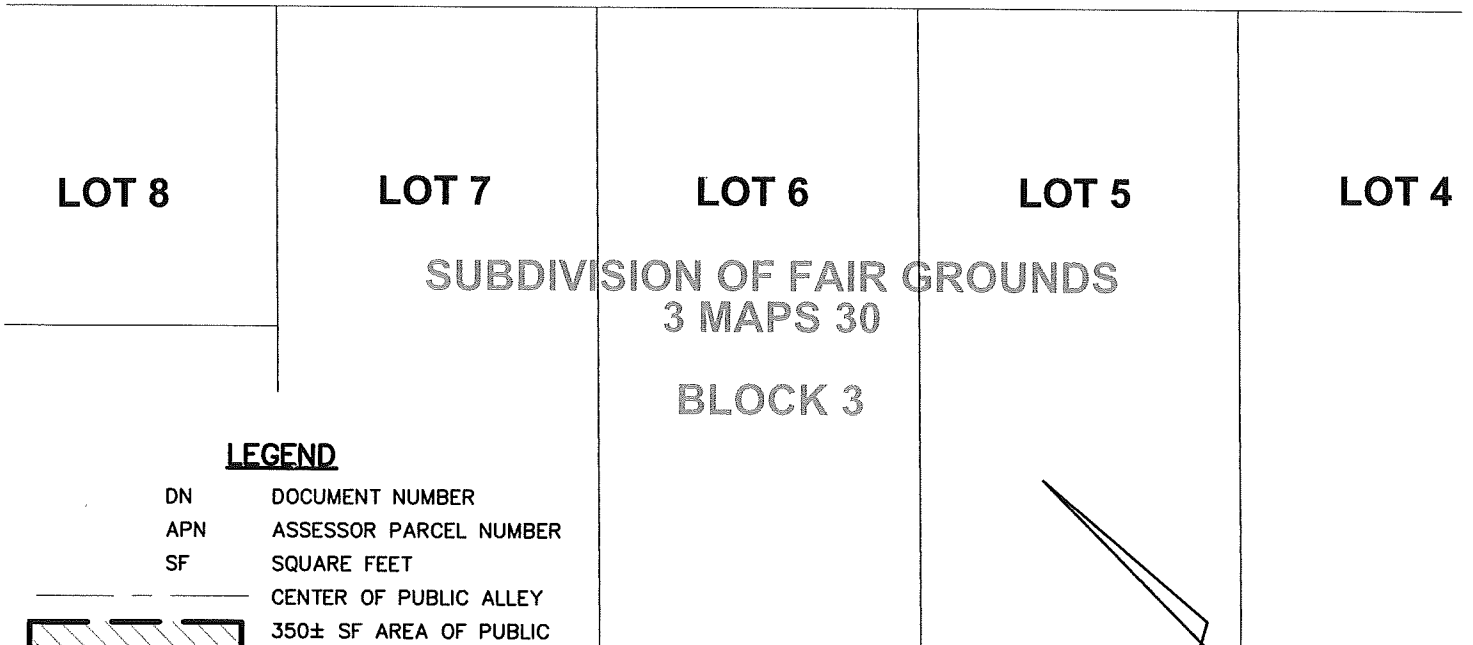
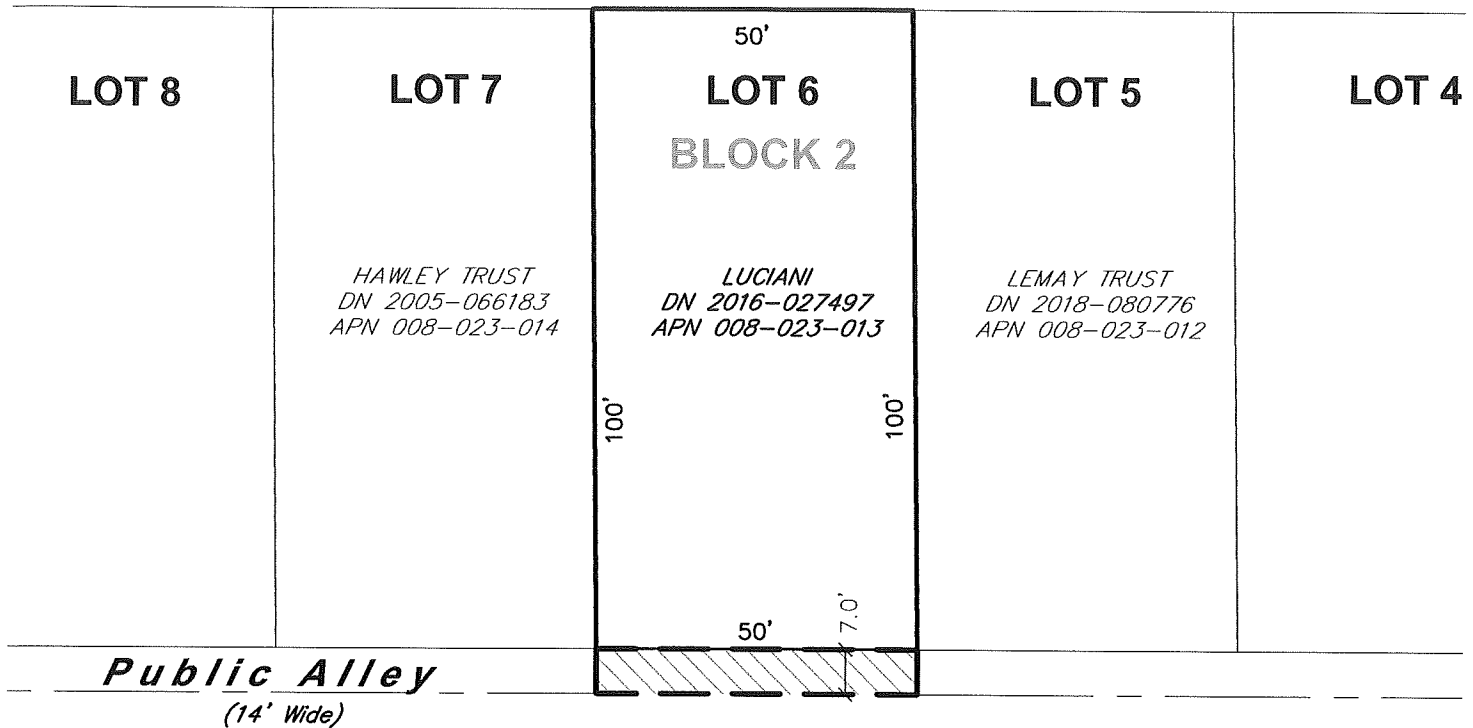


STEVEN J. LAFRANCHI & ASSOCIATES, INC.
CIVIL ENGINEERS ~ LAND SURVEYORS ~ LAND PLANNERS - LANDSCAPE ARCHITECTS
PETALUMA THEATRE SQUARE
140 SECOND STREET, SUITE 312, PETALUMA, CA 94952
TEL 707-762-3122 FAX 707-762-3239
Luciani_LD-Ex A_Public Alley Vacation_Lot 6 Block 2.docx

EXHIBIT "B"
PUBLIC ALLEY VACATION

SEE EXHIBIT "A" FOR LEGAL DESCRIPTION
FOR GRAPHIC ILLUSTRATION AND INFORMATIVE PURPOSES ONLY

Fair Street



Sheldon Street



STEVEN J. LAFRANCHI & ASSOCIATES, INC.
CIVIL ENGINEERS ~ LAND SURVEYORS ~ LAND PLANNERS ~ LANDSCAPE ARCHITECTS

PETALUMA THEATRE SQUARE
PETALUMA, CALIFORNIA 94952
140 SECOND STREET, SUITE 312
707-762-3122 FAX 707-762-3239

NORTH
SCALE: 1" = 30'

EXHIBIT "A"
LEGAL DESCRIPTION
PUBLIC ALLEY VACATION

SITUATE IN THE CITY OF PETALUMA, COUNTY OF SONOMA AND STATE OF CALIFORNIA.

BEING A PORTION OF A 14 FOOT WIDE PUBLIC ALLEY BETWEEN BLOCK 2 AND BLOCK 3 AS SHOWN UPON THAT CERTAIN MAP ENTITLED "PLAT SHOWING SUBDIVISION OF FAIRGROUNDS PETALUMA" FILED IN BOOK 3 OF MAPS, PAGE 30, SONOMA COUNTY RECORDS, DESCRIBED AS FOLLOWS:

THAT PORTION OF THE NORTHERLY HALF OF SAID PUBLIC ALLEY BOUNDED BY THE EXTENSIONS OF THE WESTERLY AND EASTERLY SIDELINES OF LOT 5, BLOCK 3 OF SAID MAP.

CONTAINING 350 SQ. FT, MORE OR LESS.

PREPARED IN THE OFFICE OF STEVEN J. LAFRANCHI & ASSOCIATES, INC. AND IS BASED ON RECORD DOCUMENTS.



STEVEN J. LAFRANCHI, P.L.S. 6368

9-3-2022

DATE

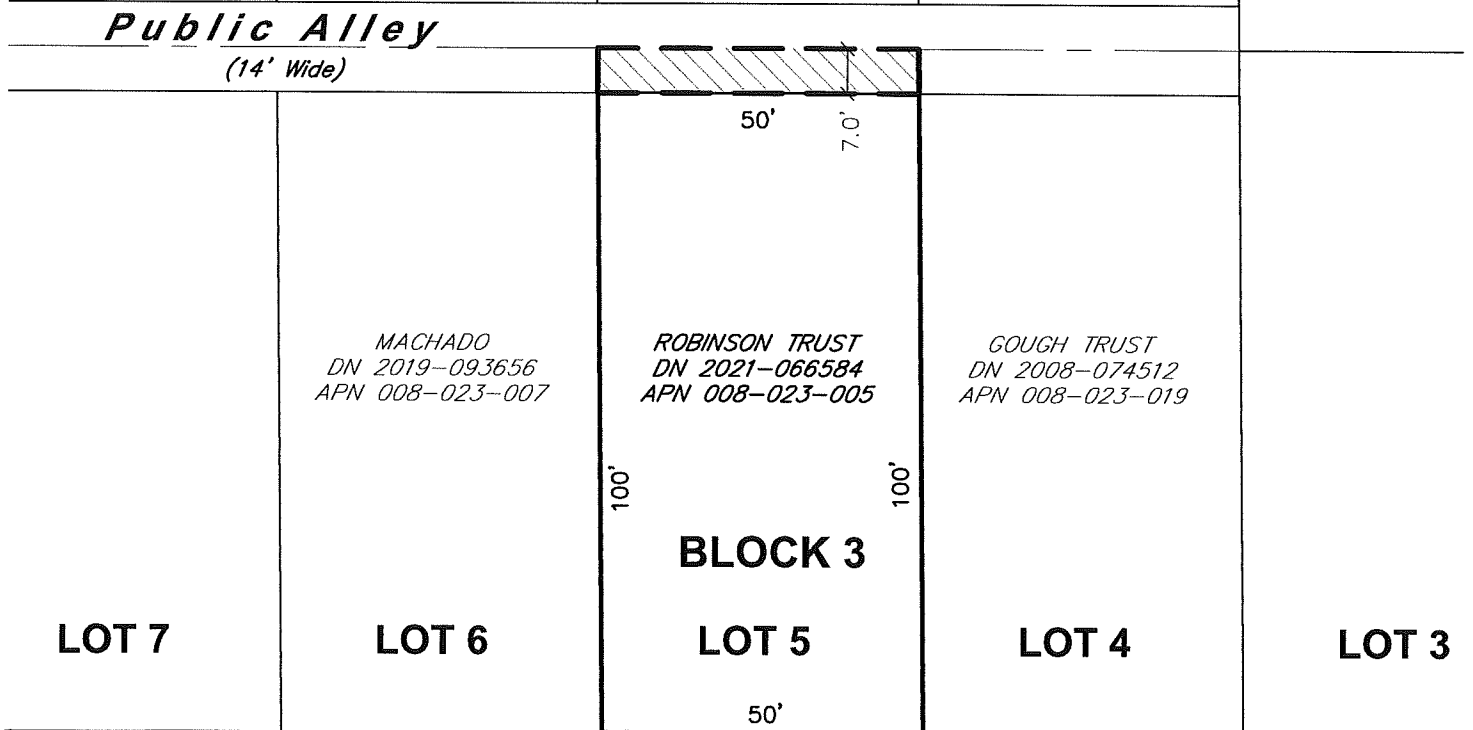
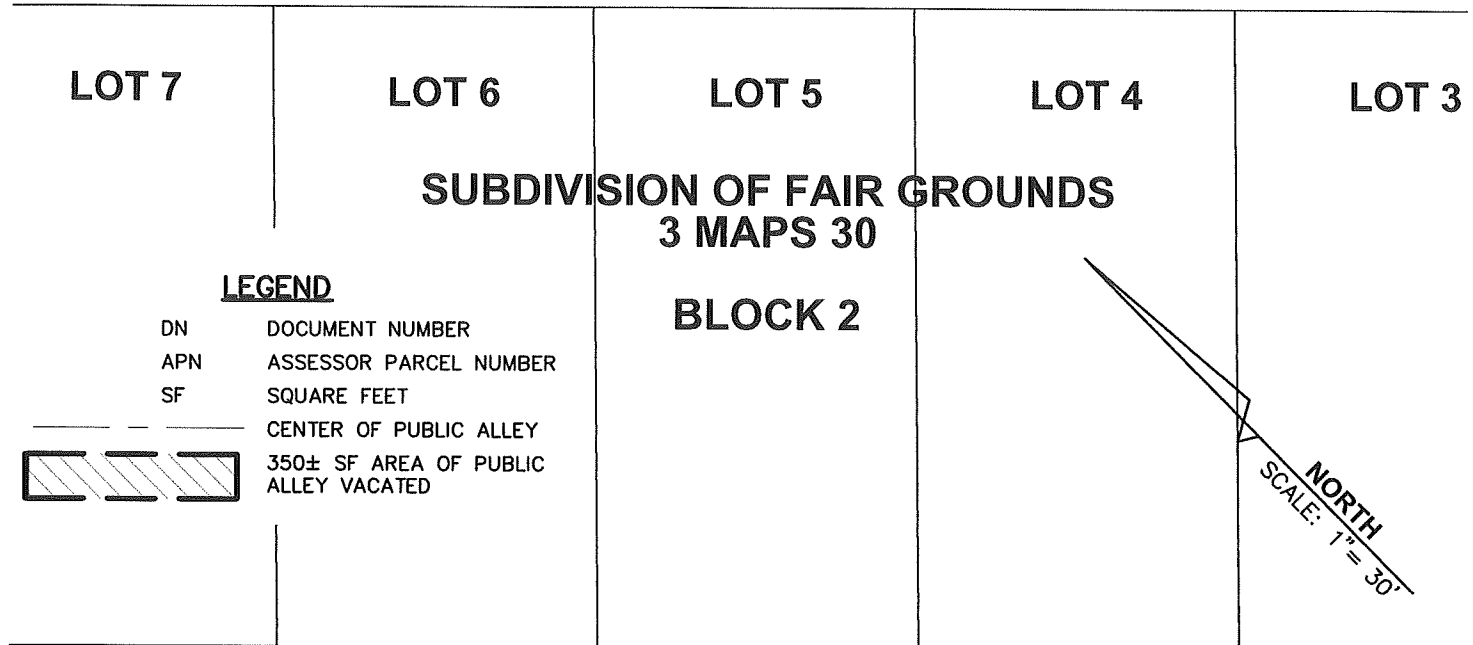


STEVEN J. LAFRANCHI & ASSOCIATES, INC.
CIVIL ENGINEERS ~ LAND SURVEYORS ~ LAND PLANNERS - LANDSCAPE ARCHITECTS
PETALUMA THEATRE SQUARE
140 SECOND STREET, SUITE 312, PETALUMA, CA 94952
TEL 707-762-3122 FAX 707-762-3239
Robinson_LD-Ex A_Public Alley Vacation_Lot 5 Block 3.docx

EXHIBIT "B"
PUBLIC ALLEY VACATION

SEE EXHIBIT "A" FOR LEGAL DESCRIPTION
FOR GRAPHIC ILLUSTRATION AND INFORMATIVE PURPOSES ONLY

Fair Street



Sheldon Street



STEVEN J. LAFRANCHI & ASSOCIATES, INC.
CIVIL ENGINEERS ~ LAND SURVEYORS ~ LAND PLANNERS ~ LANDSCAPE ARCHITECTS

PETALUMA THEATRE SQUARE
PETALUMA, CALIFORNIA 94952
140 SECOND STREET, SUITE 312
707-762-3122 FAX 707-762-3239

EXHIBIT "A"
LEGAL DESCRIPTION
PUBLIC ALLEY VACATION

SITUATE IN THE CITY OF PETALUMA, COUNTY OF SONOMA AND STATE OF CALIFORNIA.

BEING A PORTION OF A 14 FOOT WIDE PUBLIC ALLEY BETWEEN BLOCK 2 AND BLOCK 3 AS SHOWN UPON THAT CERTAIN MAP ENTITLED "PLAT SHOWING SUBDIVISION OF FAIRGROUNDS PETALUMA" FILED IN BOOK 3 OF MAPS, PAGE 30, SONOMA COUNTY RECORDS, DESCRIBED AS FOLLOWS:

THAT PORTION OF THE NORTHERLY HALF OF SAID PUBLIC ALLEY BOUNDED BY THE EXTENSIONS OF THE WESTERLY AND EASTERLY SIDELINES OF LOT 6, BLOCK 3 OF SAID MAP.

CONTAINING 350 SQ. FT, MORE OR LESS.

PREPARED IN THE OFFICE OF STEVEN J. LAFRANCHI & ASSOCIATES, INC. AND IS BASED ON RECORD DOCUMENTS.



STEVEN J. LAFRANCHI, P.L.S. 6368

9-3-2022

DATE

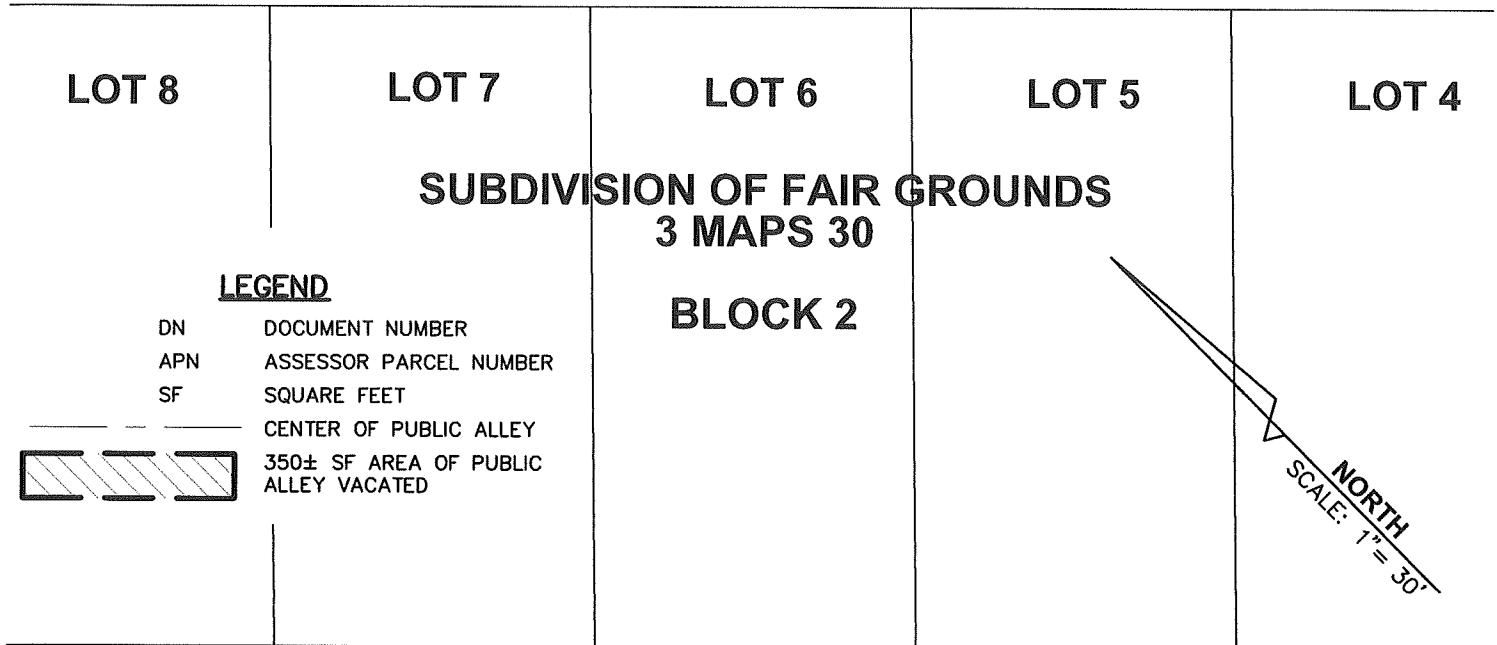


STEVEN J. LAFRANCHI & ASSOCIATES, INC.
CIVIL ENGINEERS ~ LAND SURVEYORS ~ LAND PLANNERS - LANDSCAPE ARCHITECTS
PETALUMA THEATRE SQUARE
140 SECOND STREET, SUITE 312, PETALUMA, CA 94952
TEL 707-762-3122 FAX 707-762-3239
Shelley_LD-Ex A_Public Alley Vacation_Lot 6 Block 3.docx

EXHIBIT "B"
PUBLIC ALLEY VACATION

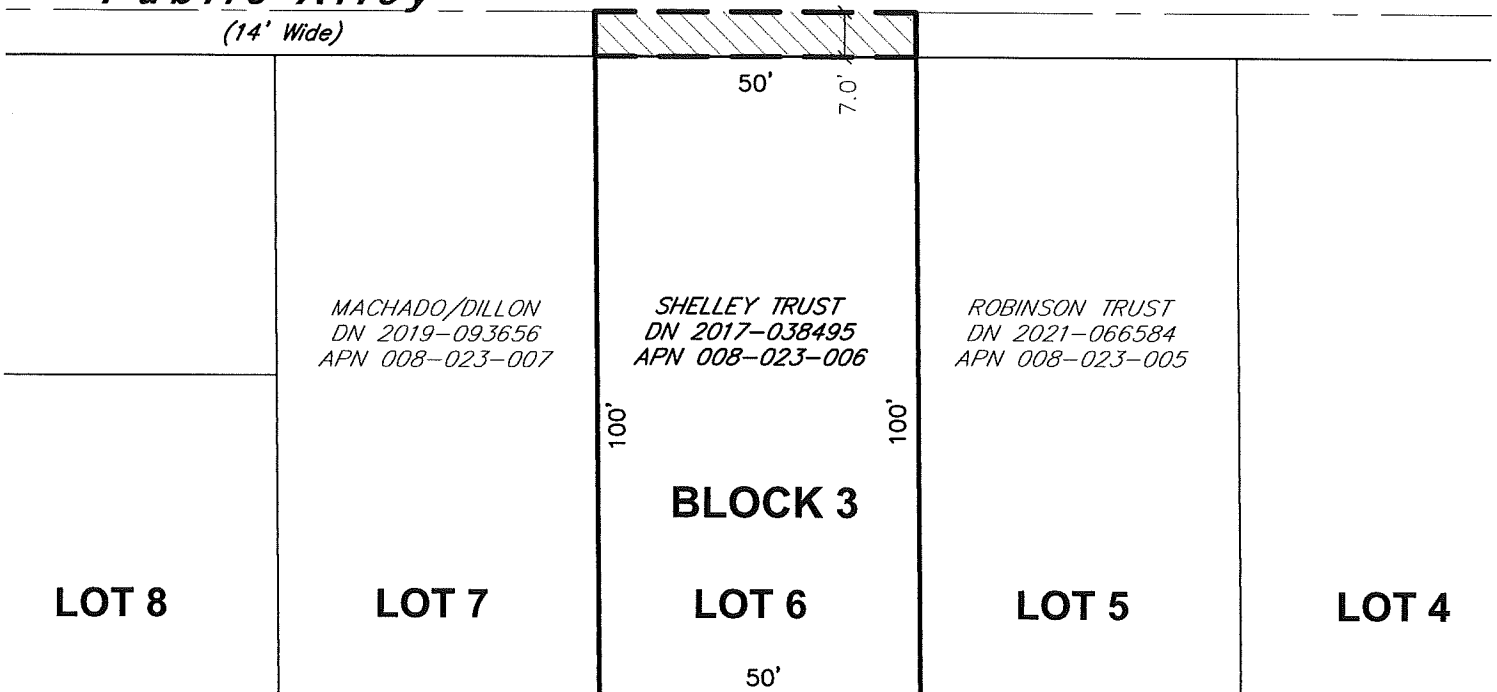
SEE EXHIBIT "A" FOR LEGAL DESCRIPTION
FOR GRAPHIC ILLUSTRATION AND INFORMATIVE PURPOSES ONLY

Fair Street



Public Alley

(14' Wide)



Sheldon Street



STEVEN J. LAFRANCHI & ASSOCIATES, INC.
CIVIL ENGINEERS ~ LAND SURVEYORS ~ LAND PLANNERS ~ LANDSCAPE ARCHITECTS

PETALUMA THEATRE SQUARE
PETALUMA, CALIFORNIA 94952
140 SECOND STREET, SUITE 312
707-762-3122 FAX 707-762-3239